

### ◆ Features

- 0.36W and 0.2W coil are available .
- Switching capacity relay for high density.
- Standard PC layout
- SPNO configuration.
- Sealed type available.



### ◆ Coil Data [at 23°C ]

#### ➤ Standard Type

Rated voltage ( V )	Coil Resistance ±10% (Ω)	Rated Current ±10% (mA)	Pick up Voltage (Max)	Drop out Voltage (Min)	Max continuous Voltage	Power consumption At rated Voltage
5	69.4	72	75% of rated voltage	5% of rated voltage	160% Max of Rated voltage	Approx.0.36W
6	100	60				
9	225	40				
12	400	30				
18	900	20				
24	1600	15				

#### ➤ High sensitivity Type

Rated voltage ( V )	Coil Resistance ±10% (Ω)	Rated Current ±10% (mA)	Pick up Voltage (Max)	Drop out Voltage (Min)	Max continuous Voltage	Power consumption At rated Voltage
5	125	40	75% of rated voltage	5% of rated voltage	170% Max of Rated voltage	Approx.0.2W
6	180	33.3				
9	405	22.5				
12	720	16.7				
18	1620	11.1				
24	2880	8.6				

### ◆ Contact Rating

TYPE	Contact rating (Res. Load)
1A (SPNO)	3A 250VAC, 3A 30VDC
1A (SPNO)	5A 250VAC, 5A 30VDC , 10A 125VAC, TV-3 125VAC

# S21 RELAY

## SHORI

### ◆ Type List

Terminal style	Contact form	Type	Designation(provided with)
PCB terminal	1A (SPNO)	Standard type	S21-12-1AS
	1A (SPNO)	High sensitivity	S21-12B-1AS

### ◆ Ordering information

S21 - 12 B - 1A S  
 1 2 3 4 5

- |   |  |
|---|--|
| 1. S21 -- Basic series designation                  | 4. 1A -- Form A, normally open (SPNO), |
| 2. 12 -- Coil Voltage (5VDC~24VDC)                  | 5. Blank -- Sealed type                |
| 3. Blank -- Standard type<br>B -- High sensitivity. | S -- Sealed type washable              |

### ◆ Specification

Contact material	Silver Alloy	
Contact resistance	100 mΩ Max	
Operate time	10 ms Max	
Release time	10 ms Max	
Insulation resistance	1000 MΩ (at 500VDC)	
Dielectric strength	Between open contact : AC 750V ,50/60Hz 1 min.	
	Between contact and coil : AC 4000V, 50/60Hz 1 min.	
Vibration resistance	Operating extremes	10~50Hz, amplitude 1.0 mm
	Damage limits	10~50Hz, amplitude 1.0 mm
Shock resistance	Functional	10G
	Destructive	100G
Life expectancy	Mechanical	5,000,000 operations (frequency 18,000 operations/hr)
	Electrical	100,000 operations (frequency 900 operations/hr)
Ambient temperature	-40°C to 70°C	
Weight	Approx.4g	

### ◆ Safety Approval

Certified	UL/CUL	VDE
File No.	E188091	

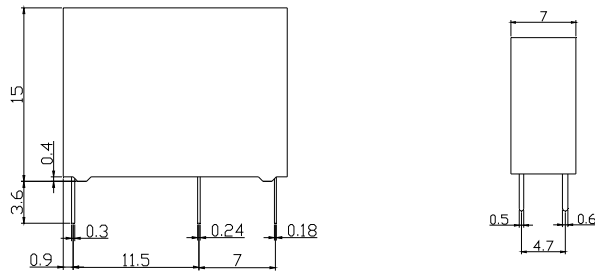
# S21 RELAY

SHORI

## ◆ Safety Approval Rating

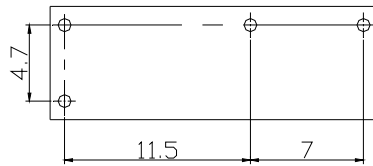
UL/CUL	
1A (SPNO)	3A 250VAC, 3A 30VDC
1A (SPNO)	5A 250VAC, 5A 30VDC , 10A 125VAC, TV-3 125VAC

## ◆ Outline Dimensions



## ◆ Wiring Diagram

- BOTTOM VIEW



## ◆ PC BOARD LAYOUT

- BOTTOM VIEW

